

# Installation instructions SOLITEX® ADHERO 3000

## Airtightness and weather protection for walls



### 1. Check the subsurface

Apply pro clima TESCON PRIMER RP or TESCON SPRIMER to subsurfaces that have insufficient stability. Adhesion tests are recommended in certain cases.



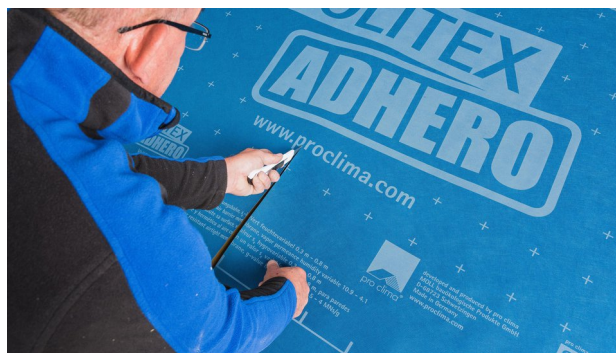
### 2. Mark the position

Decide on the position of the first membrane and mark this on the wall. Determine the membrane length.



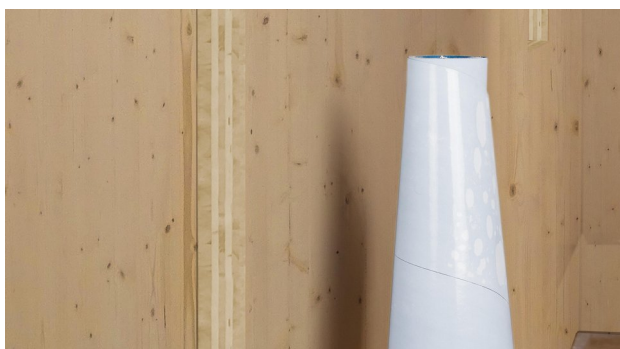
### 3. Seal the corners (with corner strip)

For interior corners and – if necessary – for exterior corners too, cut a strip of SOLITEX ADHERO that is at least 40 cm (16") in width and stick it in place with equal parts on each of the walls. Alternatively, tape can also be stuck over the corners (see Item 8).



### 4. Cut the membranes

Cut the membranes down to the required length. There are markings to make your work easier.



### 5. Roll out the cut pieces

Roll out the cut strips in such a way that the release film faces outward.



### 6. Remove the release film

The release film is split into two parts that are 25 cm and 125 cm (10" and 49") wide. The 25 cm-wide application zone is stuck in place first in the description that follows. To ensure that the wider release film can be removed more easily later on, pull off a corner of this film and fold it over. This will then be easier to grip later on.



**7. Apply the membrane (with corner strip)**

Remove approx. 20-30 cm (8"-12") of the release film of the upper application zone. Position the membrane at the marking (on the wall) and attach to the wall using the released part of the application zone. Ensure that the membrane covers at least 15 cm (6") of the corner strip.



**8. Apply the membrane (without corner strip)**

Remove approx. 20-30 cm (8"-12") of the release film of the upper application zone. Position the membrane at the marking (on the wall) and attach to the wall using the released part of the application zone. To form the corner, ensure at least 15 cm (6") of membrane continues around the corner. Work SOLITEX ADHERO into place using PRESSFIX XL and avoid hollows.



**9. Stick the application zone**

Continue rolling out the first membrane. Align it continuously with the marking. Gradually remove the release film of the application zone and stick in place. Rub using the PRESSFIX XL application tool to secure.



**10. Remove the remainder of the release film**

Grip the wide release film by the previously folded corner and pull it off.



**11. Stick to the subsurface**

Rub the tape firmly into place using PRESSFIX XL and stick the tape to the subsurface, avoiding air bubbles and folds.



**12. Install the remaining membranes**

Apply all the remaining membranes - one by one - horizontally in an overlapping, waterproof manner. The procedure is as described above. The minimum overlap for membranes is 10-15 cm (4"-6"). Rub the membranes firmly into place using PRESSFIX XL, avoiding air bubbles and folds.



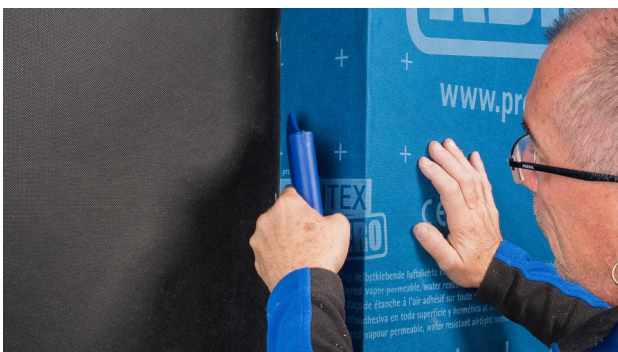
**13. Alternative: Vertical installation**

Attach SOLITEX ADHERO at the highest point. Gradually remove the release film strips by pulling them downward. Rub the membrane firmly into place using PRESSFIX XL, avoiding air bubbles and folds.



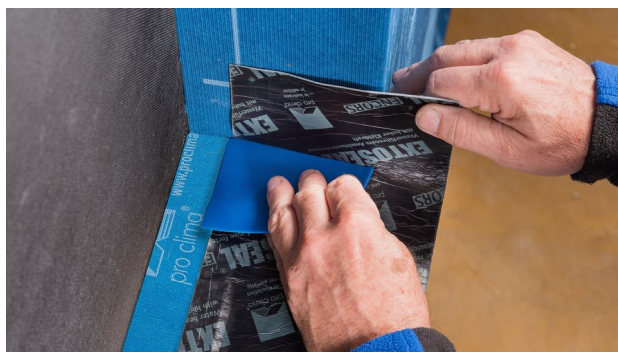
**14. Cut out window openings**

The membrane is first stuck over any window openings. To cut out the opening, cut the membranes as indicated with the red line using a cutter.



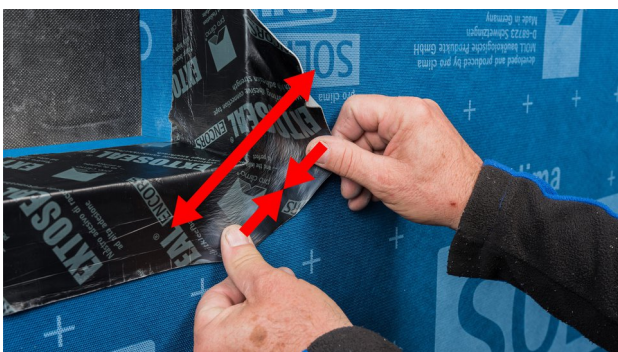
**15. Stick the membrane into the reveal**

Once SOLITEX ADHERO 1000/3000 has been cut out, fold it onto the reveal and stick it in place. Rub the membrane firmly into place using PRESSFIX XL, avoiding air bubbles and folds



**16. Form the sub-sill flashing**

To form the sub-sill flashing, stick EXTONSEAL ENCORS to the wall below the window – onto an insulation wedge, for example – to ensure that water is guided to the outside. Have the tape protrude by at least 4 cm (1.6") at the face of the wall and stick at least 15 cm (6") of this tape onto the soffits. Avoid hollows by using PRESSFIX.



**17. Stick the corners**

Fold EXTONSEAL ENCORS onto the front side and stick it to SOLITEX ADHERO. Stretch the sub-sill flashing sufficiently at the corners and then stick it in place in a manner free of tension. Rub tape firmly into place using the pro clima PRESSFIX application tool.



**18. Seal window joints on the inside and outside**

Apply window sealing tapes (e.g. CONTEGA SOLIDO SL on the inside and CONTEGA SOLIDO EXO on the outside) to the window frame all around the window. Place the window into the opening, fasten it and then stick the tapes to the reveal all around the window. The pro clima WINDOW BOX brochures provide detailed installation recommendations.



**18.1 Alternative: Sealing to flanged windows (USA)**

Insert the window, fasten it and the seal with TESCON VANA on SOLITEX ADHERO all around the window in a waterproof manner. Rub tape firmly into place using the pro clima PRESSFIX application tool.



**19. Sealing to rough substraces**

When sealing to rough substraces such as concrete components, apply a line of the ORCON F system adhesive that has a thickness of at least  $d = 5 \text{ mm}$  (1/4"); it may be necessary to use more on very rough substraces: Apply the membrane strip to the adhesive bed, leaving slack to allow for expansion. Do not press the adhesive completely flat.



**20. Repair of defects**

Stick TESCON VANA in widths of 15 or 20 cm (6" or 8") over any defects in the membrane. Rub over the stuck surface using PRESSFIX XL.



**21. Alternative with SOLITEX ADHERO**

As an alternative, defects can also be repaired by sticking a piece of SOLITEX ADHERO onto them. Rub over the stuck surface using PRESSFIX XL.



**22. Pipe feed-throughs with ROFLEX**

Seal pipe feed-throughs with a suitable ROFLEX grommet. Stick the grommet to the subsurface using TESCON VANA. Rub over the stuck surface using PRESSFIX XL.



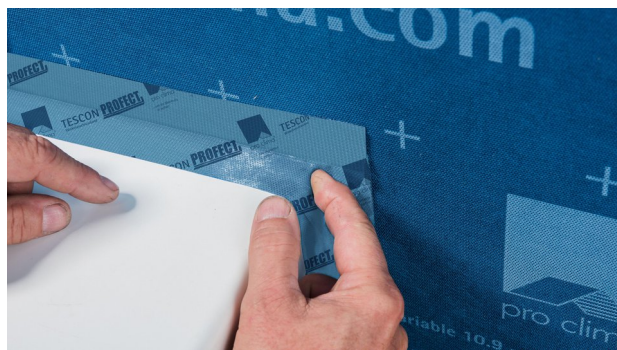
**23. Alternative with TESCON VANA**

Alternatively, the pipe feed-through can be sealed in an interlocking pattern from top to bottom in a waterproof manner using TESCON VANA.



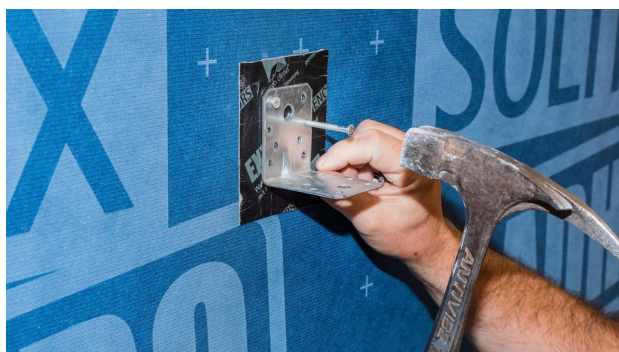
#### 24. Cable feed-throughs with KAFLEX

Place a KAFLEX sealing grommet over the cable and stick it to the membrane. Rub tape firmly into place using the pro clima PRESSFIX application tool.



#### 25. Angular penetrations

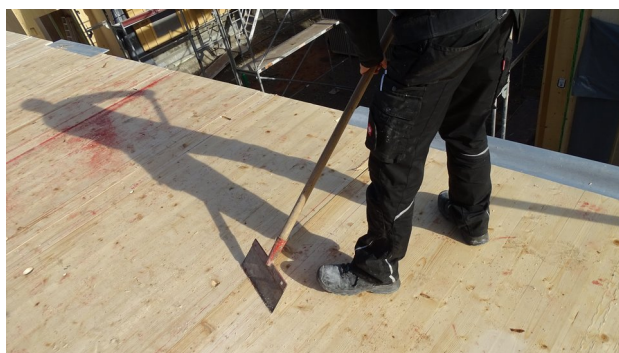
Seal angular penetrations using TESCON PROTECT. Rub tape firmly into place using the pro clima PRESSFIX application tool.



#### 26. Nail sealing

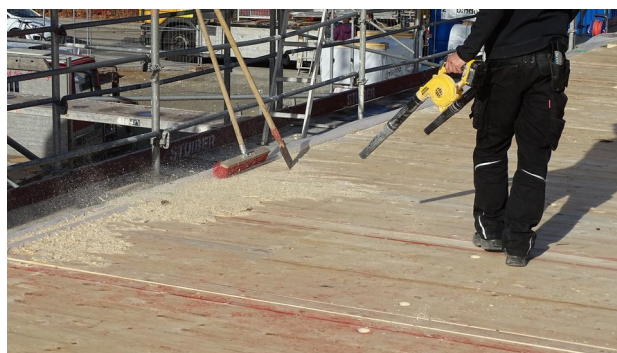
If brackets or similar parts are to be attached to the wall, use EXTOSEAL ENCORS for nail sealing.

### Sealing of floors during the construction period



#### 1. Check the subsurface

Clean coarse dirt from the subsurface and remove any protruding elements (e.g. wood splinters or screws) so that the membrane will not be damaged during installation.



#### 2. Remove loose material

Remove any loose material.



**3.1 Create marking**

Mark the position of the first membrane on the subsurface.



**3.2 Create marking**

Plan the marking and installation in such a way that there is continuous adhesion with the flat surface.



**4. Position the membrane**

Place SOLITEX ADHERO 1000/3000 in position at this marking, align it exactly in the longitudinal direction and stick the first 30 cm (1 ft.) to the subsurface.



**5. Stick the surface**

Roll out the membrane along the marking and gradually stick it to the subsurface.



**6. Press the membrane firmly into place**

Rub the membranes firmly into place – e.g. using a brush or PRESSFIX XL.



**7. Install the remaining membranes**

Stick the next membrane onto the previous membrane with 15 cm (6") of an overlap. Rub the membrane overlap with PRESSFIX XL.



**8. Alternative method of sticking membranes to each other**

As an alternative method, the membranes can be stuck to one another using TESCON VANA. Position the tape centrally and gradually stick it in place with no folds or creases. Press firmly to secure the tape in place.



**9. Joints to concrete walls**

Joints are to be sealed using the system adhesive tape, which is to cover at least 50 mm (2") of the membrane. Sealed joints with vertical building components should cover a height of approx. 10 cm (4") (upper edge of subsequent covering layer of component). Areas to be sealed are to be checked beforehand and, if necessary, pre-treated using TESCON SPRIMER, for example.



**10. Protection against seepage**

A water-resistant adhesive bond is to be created across the entire joint area. Any gaps or defects are to be covered with TESCON VANA in a waterproof manner or, if necessary, filled with ORCON MULTIBOND, for example.



**11. Drainage of surface**

If the unhindered run-off of rainwater is not possible due to protruding walls or other building features, it is to be ensured that drainage of all surfaces created can take place by means of floor drainage or suction. Avoid standing water on the membranes.



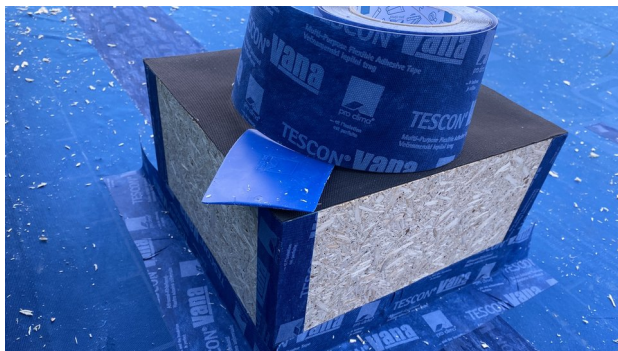
**12. Installation of ADHERO Floor Drain**

Insert the ADHERO Floor Drain into the drillhole and, if necessary, secure with countersunk screws.



**13. Seal ADHERO Floor Drain**

ADHERO Floor Drain is used to drain water from surfaces and should be sealed using the TESCON VANA system adhesive tape with no folds or creases. The system adhesive tape should cover approx. 30 to 50 mm (1 1/4" to 2") of both the membrane and the ADHERO Floor Drain. Any water that is collected is to be drained from the building.



#### 14. Penetrations

Penetrations are to be sealed using TESCO VANA in a manner that prevents seepage.



#### 15. Working carefully

The purpose of this membrane should be explained to all parties involved in the construction project and these parties should be instructed to exercise the necessary care and to use the necessary protection (e.g. protective boards, protective mats).



#### 16. Controlled drying out

To speed up drying out of any building components or membranes that may have become damp, controlled drying of the building site is recommended (accompanied by heating of the building site, if necessary).

## Substrates

### Steep roofs and walls

Clean substraces before sticking. Adhesion to frozen surfaces is not possible. There must be no water-repellent substances (e.g. grease or silicone) on materials to be bonded. Subsurfaces must be sufficiently dry and stable.

Bonding and joints are possible with planed and painted wood, hard plastics and metal (e.g. pipes, windows etc.), hard wood-based panels (chipboard, OSB, plywood, MDF and wood fibre underlay panels) and mineral substraces such as concrete, unplastered masonry or plaster. Concrete or plaster substraces must not be sandy or crumbling.

It is your responsibility to check the suitability of the substrate; adhesion tests are recommended in certain cases. Pretreatment with TESCO PRIMER is required in the case of adhesion to wood-fibre underlay panels or substraces that have insufficient stability.

### Temporary protection for floor during construction

Clean substraces before sticking – remove any protruding elements. Adhesion to frozen surfaces is not possible. There must be no water-repellent substances (e.g. grease or silicone) on materials to be bonded. Subsurfaces must be sufficiently dry and stable.

It is your responsibility to check the suitability of the substrate; adhesion tests are recommended in certain cases.

## General conditions

### Steep roofs and walls

SOLITEX ADHERO 3000 is to be installed with the printed side facing the installation technician; it can be installed on stable substraces (e.g. OSB, chipboard, MDF, plywood sheets, wood fibre underlay panels, layers of plaster (e.g. gypsum, lime, lime cement), masonry, concrete etc.). The membranes can be installed on walls either vertically or horizontally in an overlapping, waterproof manner. If significant rain loads are expected (e.g. in roof areas or on walls with high loads of driving rain), horizontal waterproof installation is recommended.

To achieve airtight installation, membranes must be installed with no folds or creases. When installing the membranes, rub them firmly into place using PRESSFIX XL.



This product can also be used as a temporary covering for up to 3 months to protect inclined roofs with a roof pitch of greater than 14° in accordance with the regulations of the Central Association of the German Roofing Trade (ZVDH). In addition, system components such as the TESCON NAIDECK nail sealing tape and the KAFLEX / ROFLEX pipe and cable grommets are to be used. The specifications in the regulations of the German Roofing Trade are to be taken into account when carrying out installation and adhesion.

#### Temporary protection for ceilings/floors during construction

SOLITEX ADHERO 3000 is to be installed with the printed side facing the installation technician; it can be installed on stable subsurfaces (e.g. CLT, OSB, chipboard and plywood sheets).

To achieve waterproof installation, membranes must be installed with no folds or creases. When installing the membranes, rub them firmly into place using a brush or PRESSFIX XL, for example.

If SOLITEX ADHERO 3000 is to be stuck to floor/ceiling elements during the prefabrication stage, TESCON VANA must be used to stick the element/membrane joints. Select the width so that a width of at least 5 cm (2") can be stuck on both of the elements. For joints, stick at least 5 cm (2") of TESCON VANA onto SOLITEX ADHERO 3000. Create a joint height of approx. 10-15 cm (4" - 6") at protruding walls.

SOLITEX ADHERO 3000 can provide temporary protection for intermediate ceilings and floors on multi-storey CLT (cross-laminated timber) or wooden-frame buildings during construction for a period of up to 4 weeks.

Water is to be drained from the surface of the building component, e.g. using ADHERO Floor Drain. A short-term build-up depth (max. 24 hours) of 30 mm (1 1/4") must not be exceeded.

---

The information provided here is based on practical experience and the current state of knowledge. We reserve the right to make changes to the recommended designs and processing or to make alterations due to technical developments and associated improvements in the quality of our products. We would be happy to inform you of the current technical state of the art at the time you use our products.

Further information about the application and construction can be found in the pro clima planning documentation. For queries please call the pro clima technical hotline on +49 (0)6202 278245.

---

#### MOLL

**bauökologische Produkte GmbH**  
Rheintalstraße 35 - 43  
D-68723 Schwetzingen  
Fon: +49 (0) 62 02 - 27 82.0  
eMail: info@proclima.de